

# KYOTO INSTITUTE OF TECHNOLOGY



K Y O T O  
I N S T I T U T E O F  
T E C H N O L O G Y

MAY 2026



# ABOUT KIT



National University established in 1949



Located in **Kyoto** City



Selected as one of the Top Global Universities by the Japanese government



President  
Dr. YOSHIMOTO Masahiro

ART X SCIENCE

LOCAL X GLOBAL

TRADITION X INNOVATION

# ABOUT KYOTO CITY



Population of the city: 1.45 mil.



Student Friendly: 43 universities and colleges



Living museum of Japan's history



Safe Environment



Efficient Public Transport



# HISTORY

Sen-i  
繊維

Kogei  
工芸

1899 Kyoto College of **Textile Fiber**

1902 Kyoto College of **Technology**

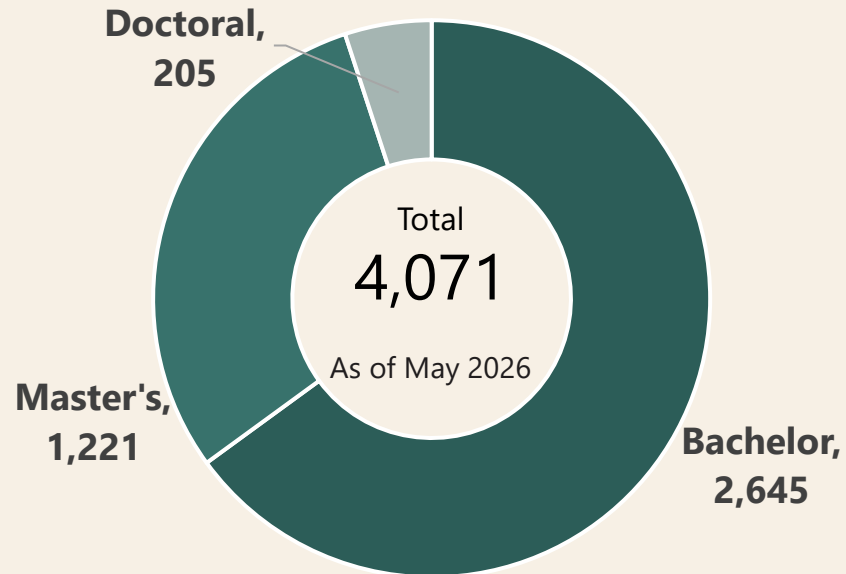


1949 Kyoto Institute of Technology

京都工芸繊維大学  
Kyoto Kogei Sen-i Daigaku

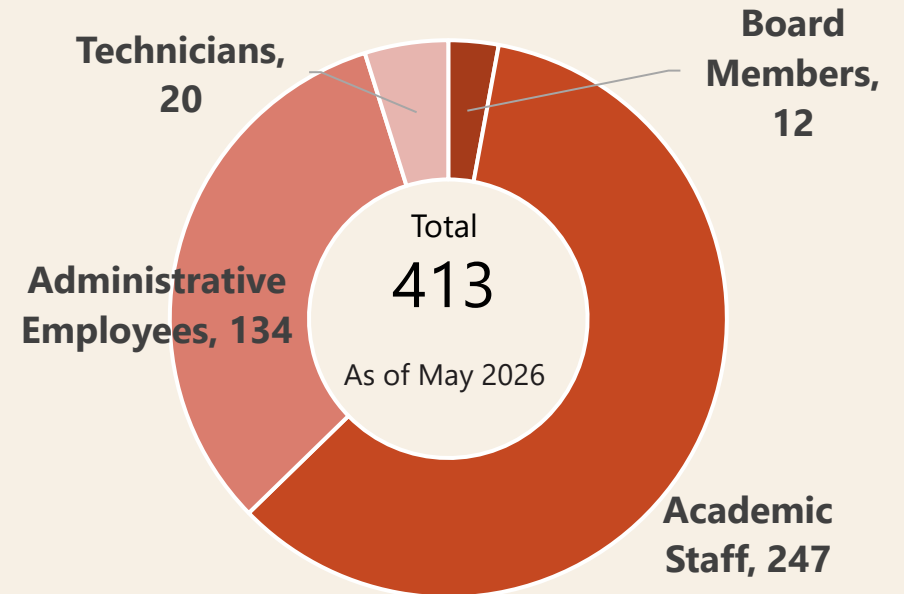
# FACTS & FIGURES

Number of Students



Student  
Faculty  
Ratio  
**16:1**

Number of Staff



Applied Biology	22	Design and Architecture	37
Materials Science and Engineering	29	Arts and Sciences	28
Molecular Chemistry and Engineering	30	Center for the Possible Futures	6
Electrical Engineering and Electronics	23	Center for ICT Services	0
Mechanical Engineering	25	Center for Industry-Academia-Government Collaboration	2
Information and Human Sciences	26	Others	0
Fiber Science and Engineering	19		

# HIGHLIGHTS OF RESEARCH AT KIT

## World's first long-time virus droplet calculation

Japan Open Innovation Prize

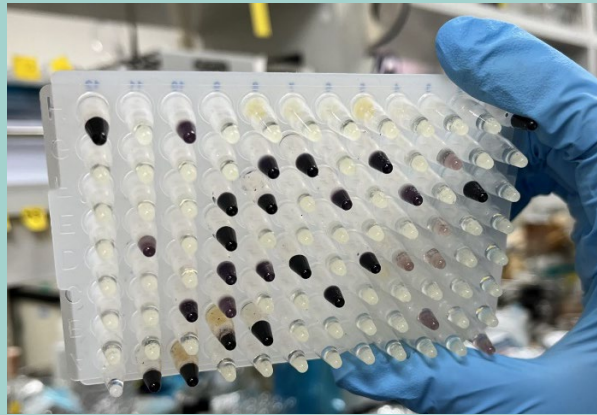


Prof. YAMAKAWA Masashi  
Faculty of Mechanical Engineering

Conducted joint research with Sharp Corporation to confirm the effectiveness of air conditioners with air purifiers in capturing virus droplet particles.

<http://www.etr.kit.ac.jp/research.html>

## Plastics Good for the Earth Development of eco-friendly bioplastics using microbes



Prof. ASO Yuji  
Faculty of Fiber Science and Engineering

Developed a screen method for the bio-vinyl monomers based on two-step coupling reactions, thiol-ene and Heck reactions, with terminal double bonds of the monomers.

<https://www.biobased.kit.ac.jp/en/>

## Dissolve CNTs in non-water solvent Challenging the "Law of Dissolving CNT" with the power of AI



Assoc. Prof. NONOGUCHI Yoshinori  
Faculty of Materials Science and Engineering

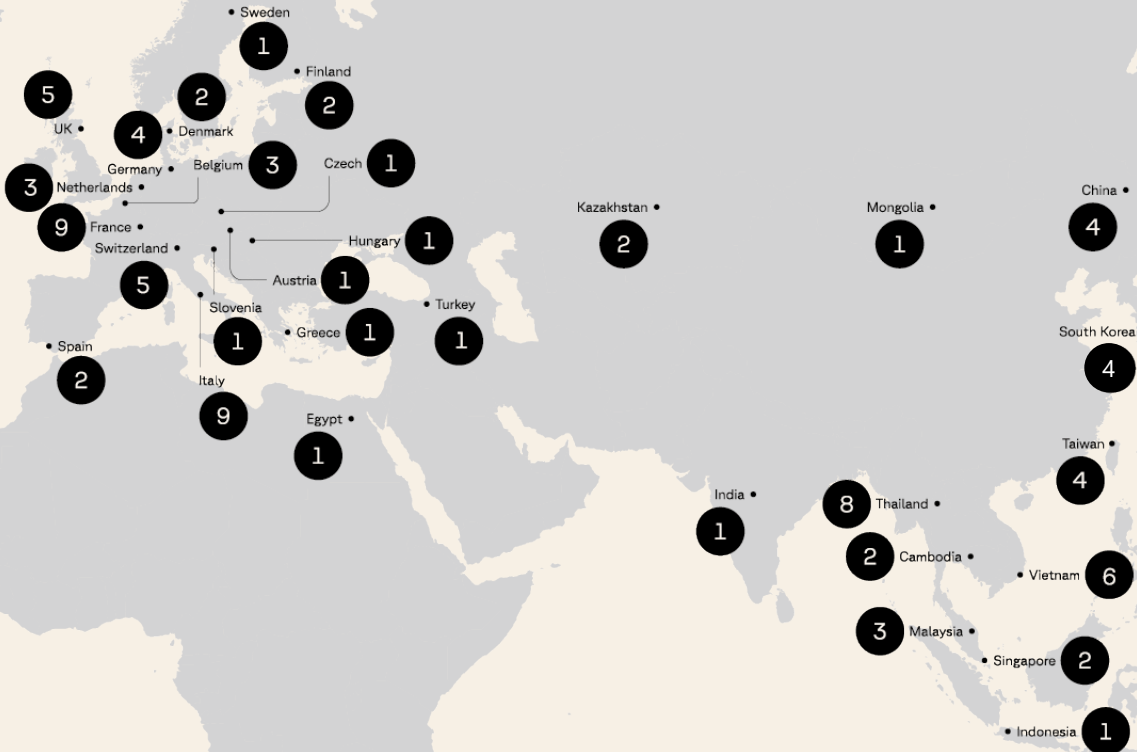
Mixing carbon nanotubes with various materials such as metals and resins, which has been a challenge for their practical application, and are now working to elucidate their mechanisms.

<https://kit-nanolab.com/en/>

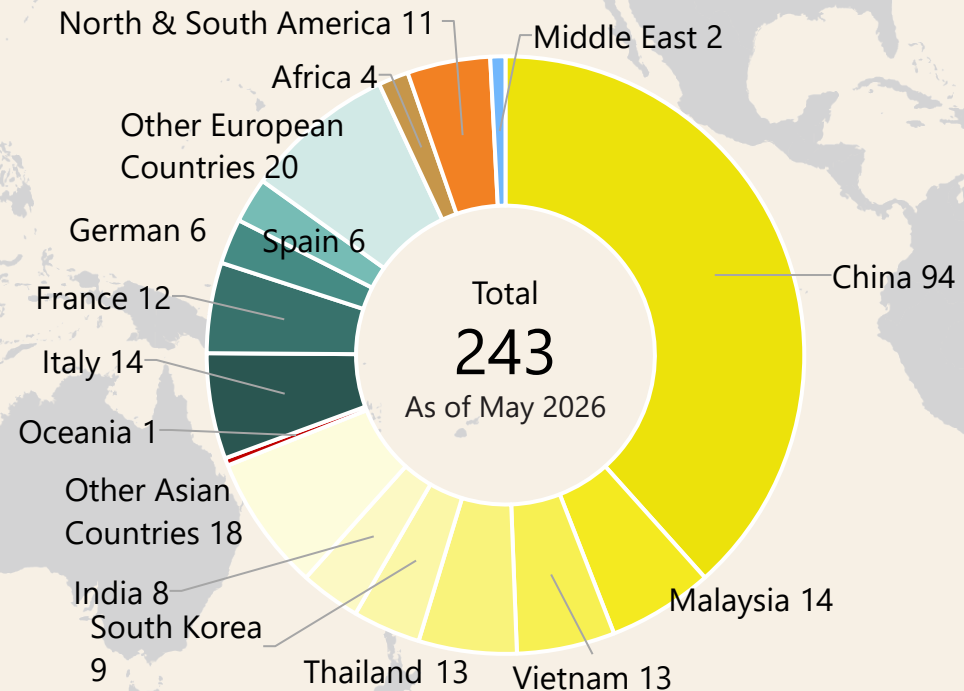
# INTERNATIONAL ACADEMIC EXCHANGE

96 partner institutions in 32 countries/regions

As of May 2026



International Students Enrollment



# ACADEMIC PROGRAMS

## Degrees

### Undergraduate

### Master's Programs

### Doctoral Programs

## APPLIED BIOLOGY

- Applied Biology

- Applied Biology

Agriculture

- Biotechnology

Philosophy OR Engineering

## MATERIALS SCIENCE

- Applied Chemistry

- Innovative Materials
- Material's Properties Control
- Materials Synthesis
- Functional Chemistry

Engineering

- Materials Chemistry

Philosophy OR Engineering

## ENGINEERING DESIGN

- Electronics
- Information Science
- Mechanical Engineering

- Electronics
- Information Science
- Mechanophysics
- Mechanodesign

Engineering

- Electronics
- Engineering Design

Philosophy OR Engineering

## DESIGN

- Design and Architecture

- Design
- Architecture
- KIT&CMU Joint Program in Architecture

Engineering

Engineering OR Architectural Design

Architecture

- Design
- Architecture

Philosophy OR Engineering

## FIBER-SCIENCE & ENGINEERING

- Advanced Fibro-Science
- Biobased Materials Science

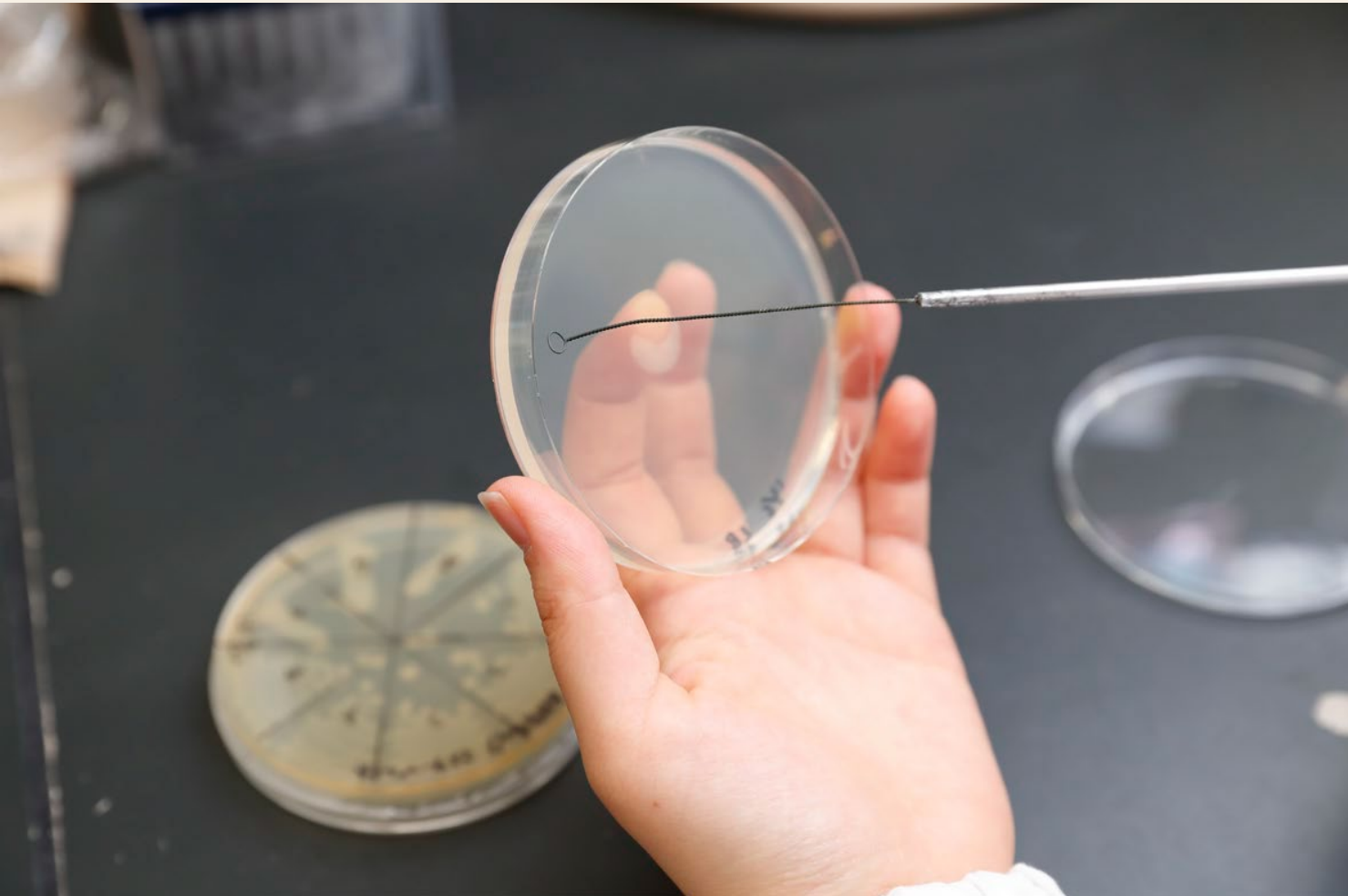
Engineering

- Advanced Fibro-Science
- Biobased Materials Science

Philosophy OR Engineering

# APPLIED BIOLOGY

## APPLIED BIOLOGY



### LABORATORIES

Cell Signaling and Engineering	生体分子機能学
Applied Microbiology	微生物工学
Plant Science and Molecular Engineering	植物分子工学
Neuroscience	生体機能学
Human Performance	生体行動科学
Structural Bioengineering	構造生物学
Insect Biotechnology	昆虫工学
Chromosome Engineering	染色体工学
Applied Genomics	応用ゲノミクス
Applied Entomology	資源昆虫学
Applied Botany	資源植物学
Genetic Resources and Biotechnology	遺伝資源科学
Biomedical and Developmental Biology	バイオメディカル学
Synthetic Neurobiology	高次生命機能創製
Life and Data Science	バイオデータサイエンス

# INNOVATIVE MATERIALS

MATERIALS SCIENCE

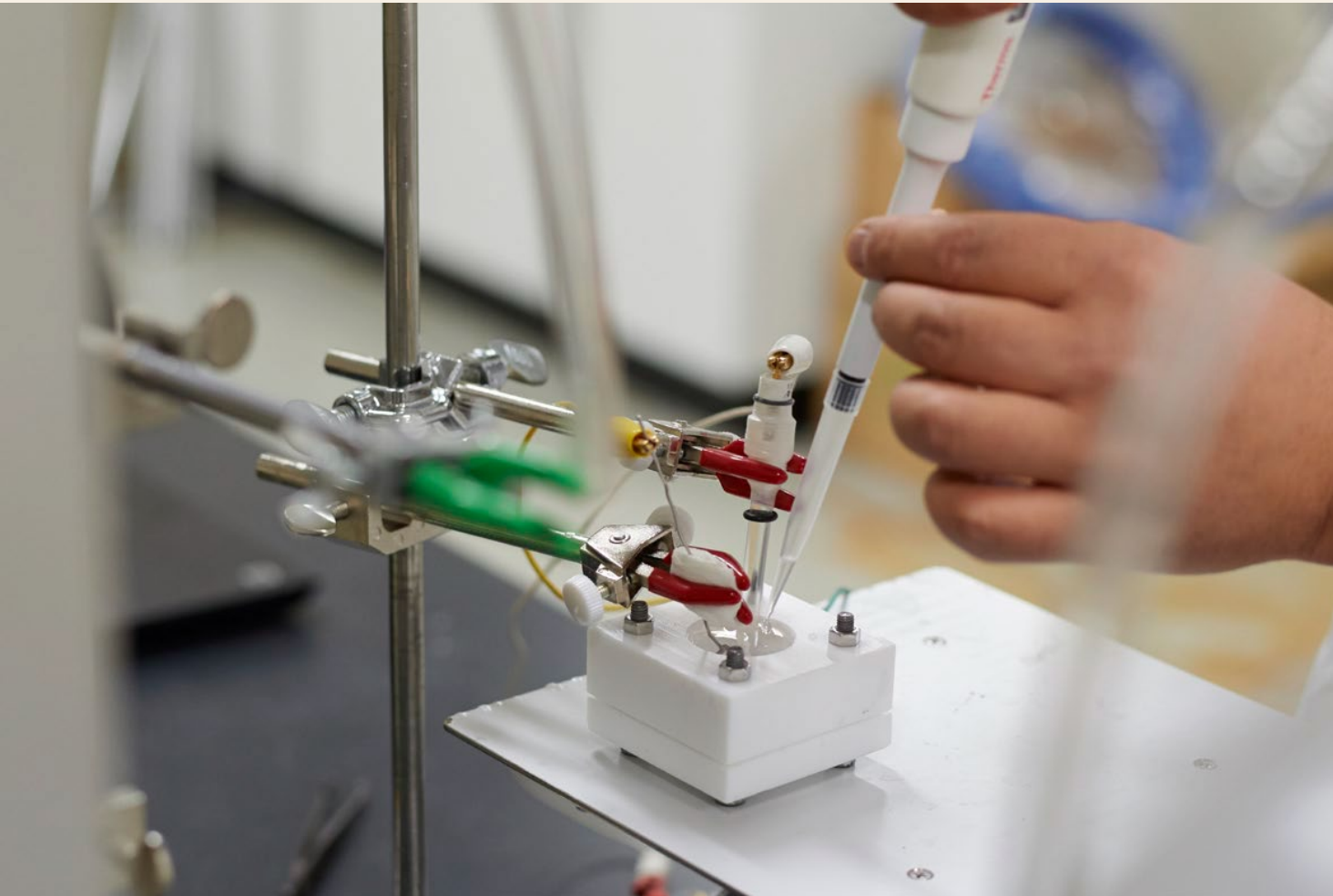


## LABORATORIES

Functional Polymer Design	機能高分子設計
Polymer Photonics	高分子フォトニクス
Polymer Physics	高分子物理学
Functional Organic Material Chemistry	機能有機材料化学
Polymer Synthesis Chemistry	高分子合成化学
Photochemical Materials Science	光機能無機材料
Physical Chemistry of Excited Molecules	励起分子工学
Advanced Solid State Chemistry	ナノ物性化学
Amorphous Technology	アモルファス工学
Inorganic Materials Physical Chemistry	無機材料物理化学
Applied Quantum Chemistry to Design Nanomaterials	ナノ材料計算化学

# MATERIAL'S PROPERTIES CONTROL

MATERIALS SCIENCE

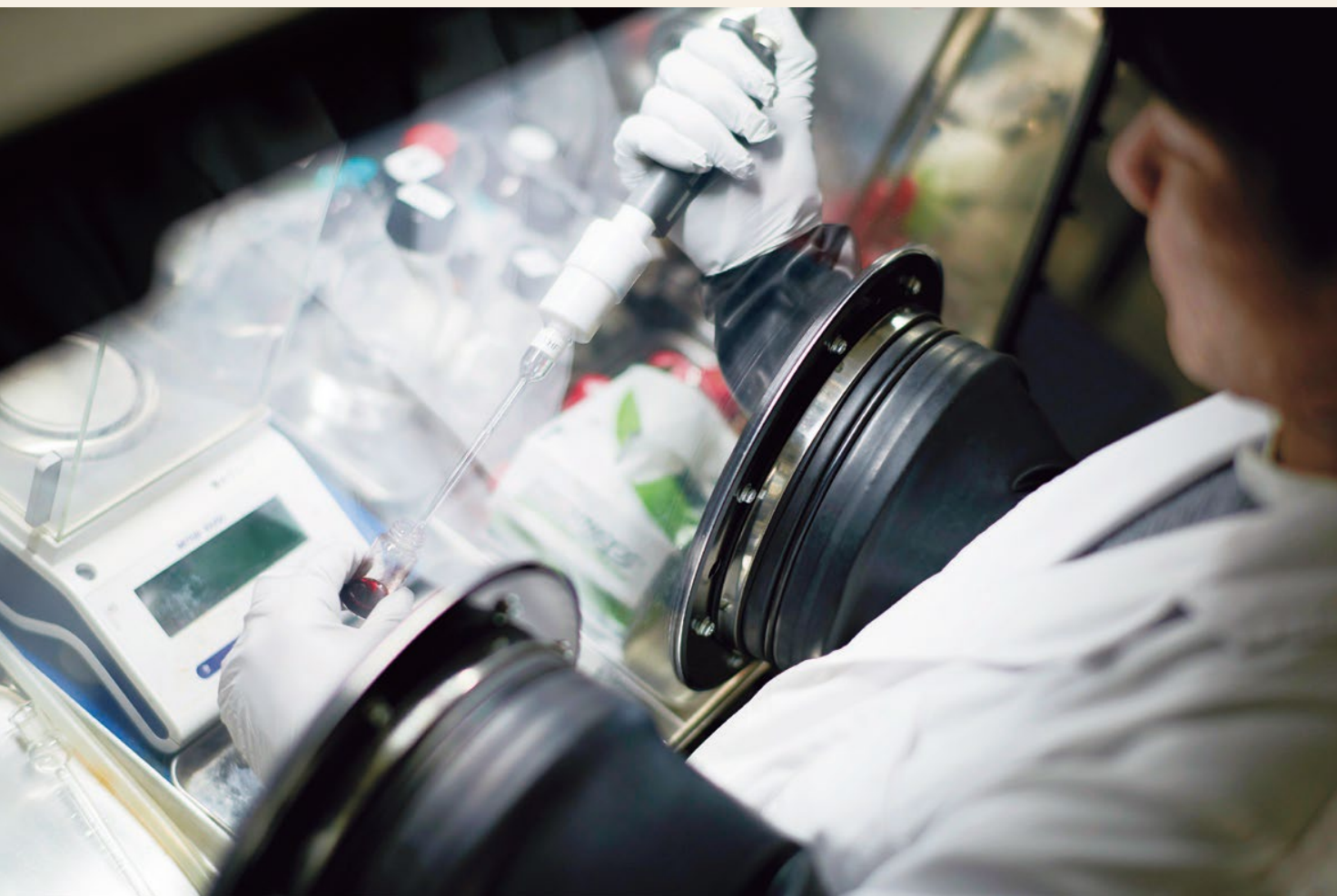


## LABORATORIES

Polymer Molecular Engineering	高分子物性工学
Nanomaterials Chemistry	ナノ材料化学
Fibrous Material Science	繊維高分子材料
Polymer Mechanics	繊維高分子力学
Textile Engineering Design	繊維製品設計
Condensed Matter Physics	物性物理学
Supramolecular Materials Science	超分子材料学
Atomic and Molecular Science	原子分子物理化学
Inorganic Materials Design	無機材料設計学
Ceramic Physics	セラミック物理学
Biomaterials Engineering	生体材料工学
Advanced Integrate Interconnect Materials	集積材料・異相界面科学

# MATERIALS SYNTHESIS

MATERIALS SCIENCE



## LABORATORIES

Synthetic Molecular  
Chemistry

分子合成化学

Organofluorine Chemistry

有機フッ素化学

Advanced Molecular  
Materials Chemistry

先進分子材料創成学

Functional Polymeric  
Materials

機能性高分子材料学

Precision Organic  
Materials Chemistry

精密有機材料学

Applied Complex  
Materials Chemistry

応用錯体化学

Organic Molecular  
Materials Chemistry

有機分子材料化学

Function-oriented  
Synthetic Chemistry

機能合成化学

Polymer Organic Chemistry

高分子有機化学

Chemical Reaction  
and Catalyst Design

反応・触媒設計学

# FUNCTIONAL CHEMISTRY

MATERIALS SCIENCE

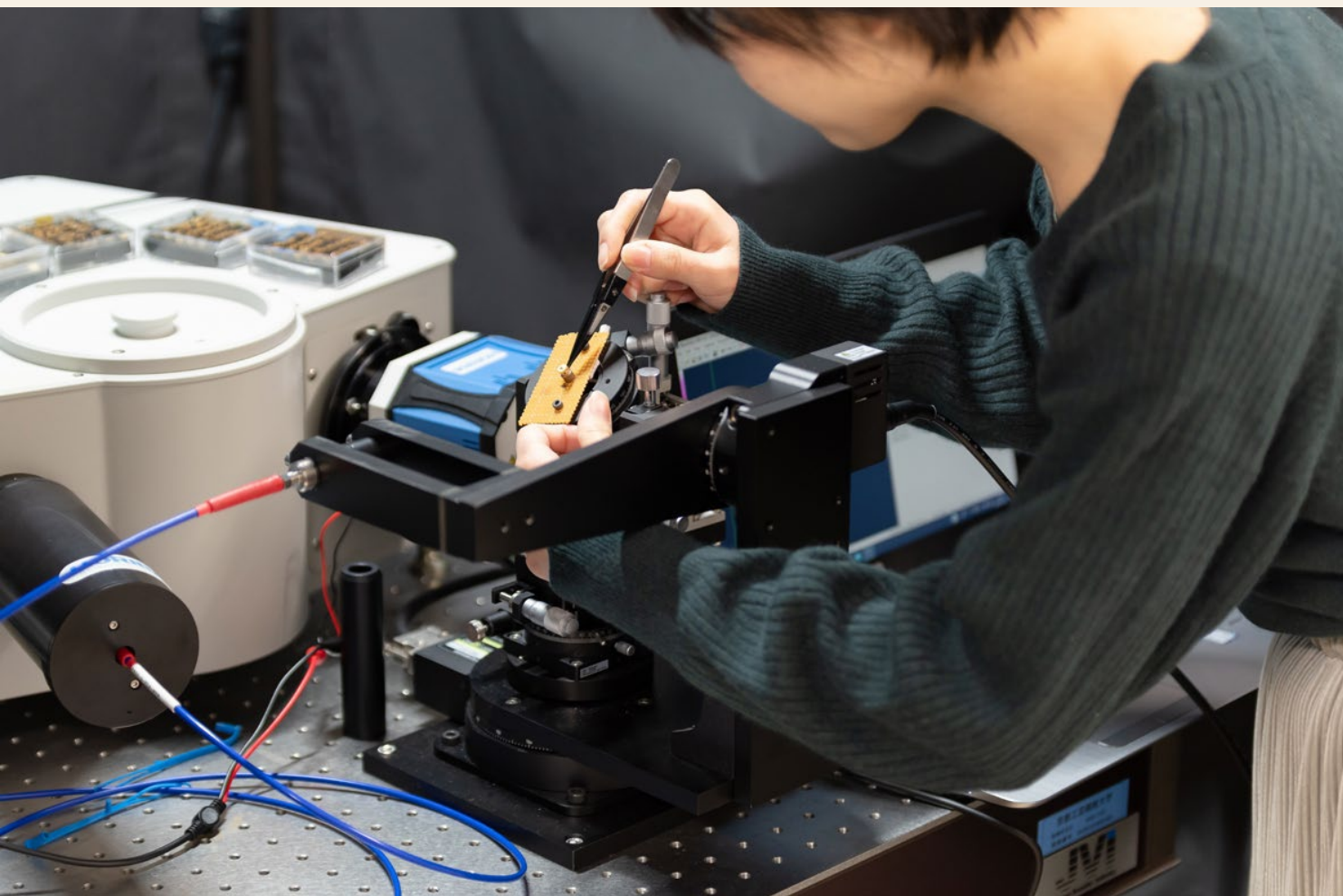


## LABORATORIES

Bioregulation Chemistry	生体高分子情報
Biochemical Engineering	生物化学工学
Molecular Structural Chemistry	分子構造化学
Biophysical Chemistry	生物物理化学
Biological Creation	生物創成学
Biosensing	バイオセンシング
Analytical Chemistry	物質分析学
Environmental Measurement Technology	環境計測学

# ELECTRONICS

## ENGINEERING DESIGN



### LABORATORIES

VLSI System	集積システム
Microwave Engineering	高周波通信工学
Advanced Electromagnetic Wave Engineering	先進電磁波動工学
Optoelectronics	光エレクトロニクス
Integrated Photonics	光エンジニアリング/ 集積フォトニクス
Imaging Photonics	光エンジニアリング/ 画像フォトニクス
Electronics Device Engineering	電子デバイス工学
Semiconductor Engineering	半導体工学
Functional Materials Science and Engineering	機能性材料工学
Electronic Science and Engineering	電子物性工学
Plasma Science and Technology	プラズマ基礎工学
Nano Structure Science	ナノ構造科学
Quantum Theory of Condensed-matter Physics	量子物性理論

# INFORMATION SCIENCE

## ENGINEERING DESIGN



### LABORATORIES

Computational Intelligence and Systems

情報知能システム

Social Intelligence and Informatics

社会知能情報学

Multimedia Data Engineering

マルチメディア  
データ工学

Digital Healthcare

デジタルヘルスケア

Computer Vision

コンピュータビジョン

Image Processing

画像工学

Visual Information

視覚情報

Computer Systems

コンピュータシステム

Software Engineering

ソフトウェア工学

Intelligent Software Engineering

知能ソフトウェア工学

Information Security

情報セキュリティ

Communication Systems

コミュニケーション  
システム

Complex Systems

複雑システム

Wireless Communications

ワイヤレス  
コミュニケーション

Distributed Systems

分散システム

Educational Technology

教育情報システム

Cognitive Behavioral Science

認知行動科学

Human Interface

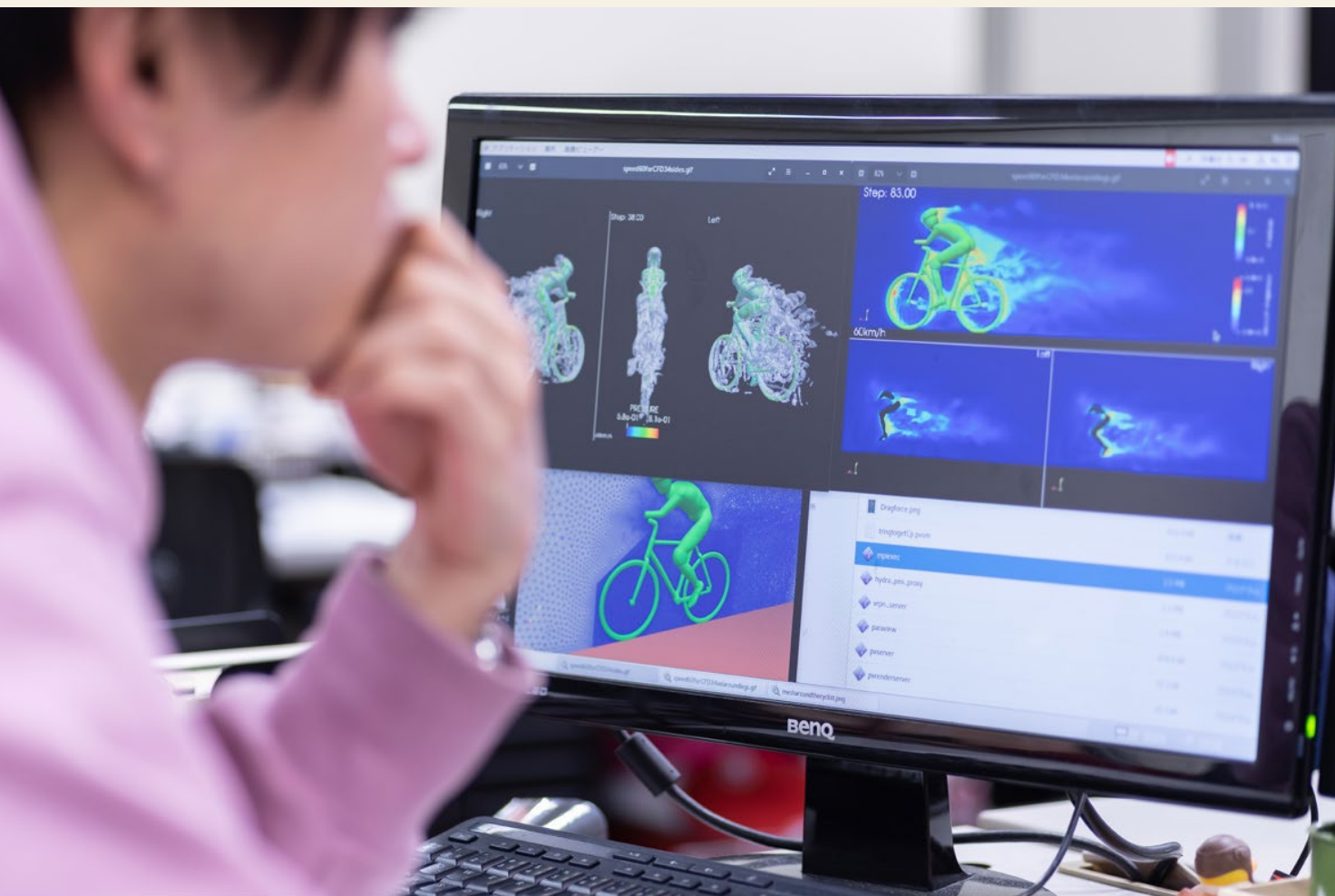
ヒューマン  
インタフェース

Brain Science

ブレインサイエンス

# MECHANOPHYSICS

## ENGINEERING DESIGN



## LABORATORIES

Thermal Fluid Device Engineering	熱流体デバイス工学
Thermoenergy Engineering	熱エネルギー工学
Control of Transport Phenomena	輸送現象制御学
Bio Micro System	バイオマイクロシステム
Advanced Fluid Dynamics and Energy Transfer	エネルギー変換輸送工学
Biofluid Mechanics	生物流体力学
Computational Materials Design	数値材料デザイン
High-Performance Physical Simulation	高性能物理演算
Smart Structural Systems and Structural Intelligence	知的構造システム学
Vibration Prevention and Control	防振システム工学

# MECHANODESIGN

## ENGINEERING DESIGN



### LABORATORIES

Fracture and Strength of Advanced Materials	先端材料学
Transscale Material Function Control	トランススケール材料機能制御
Metal Forming	塑性加工
Precision Manufacturing	精密加工
Micro/Nano Processing	マイクロ・ナノ加工学
Surface Functionalization Processing	機能表面加工学
Production Systems Engineering and Informatics	生産システム情報学
Robotics	ロボティクス
Unified Morpho-Engineering	生物知能デザイン・ロボティクス
Measurement Systems	計測システム工学

# DESIGN

## DESIGN



## LABORATORIES

Inclusive Design	インクルーシブ デザイン	Communication Design	伝達デザイン
Japanese Art and Cultural History	日本美術・文化史	Facility Design Management	環境デザイン経営
Product Design Planning	製品デザイン計画	Metadesign	メタデザイン
Visual Design	視覚デザイン	Design History	デザイン史
Theory of Contemporary Art	現代芸術論	Narrative Communication Design	ビジュアル コミュニケーション デザイン
Contemporary Design	現代デザイン	Product design	プロダクトデザイン
Art History and Museology	美術史・美術館学	Information Design	プロセスデザイン
Industrial Structures and Business Strategies	製品産業経営学	Living Environment Design	生活環境デザイン
Color & Affective Engineering	色彩・感性工学	Information Technologies and Human Interface	情報環境工学
Design Thinking, Innovation, and Entrepreneurship	デザイン思考・ アントレプレナーシップ	Crafts and Innovation*	伝統職とイノベーション
Design for Sustainability	サステイナビリティ デザイン		
Design Philosophy	デザインフィロソフィー		

# ARCHITECTURE

DESIGN

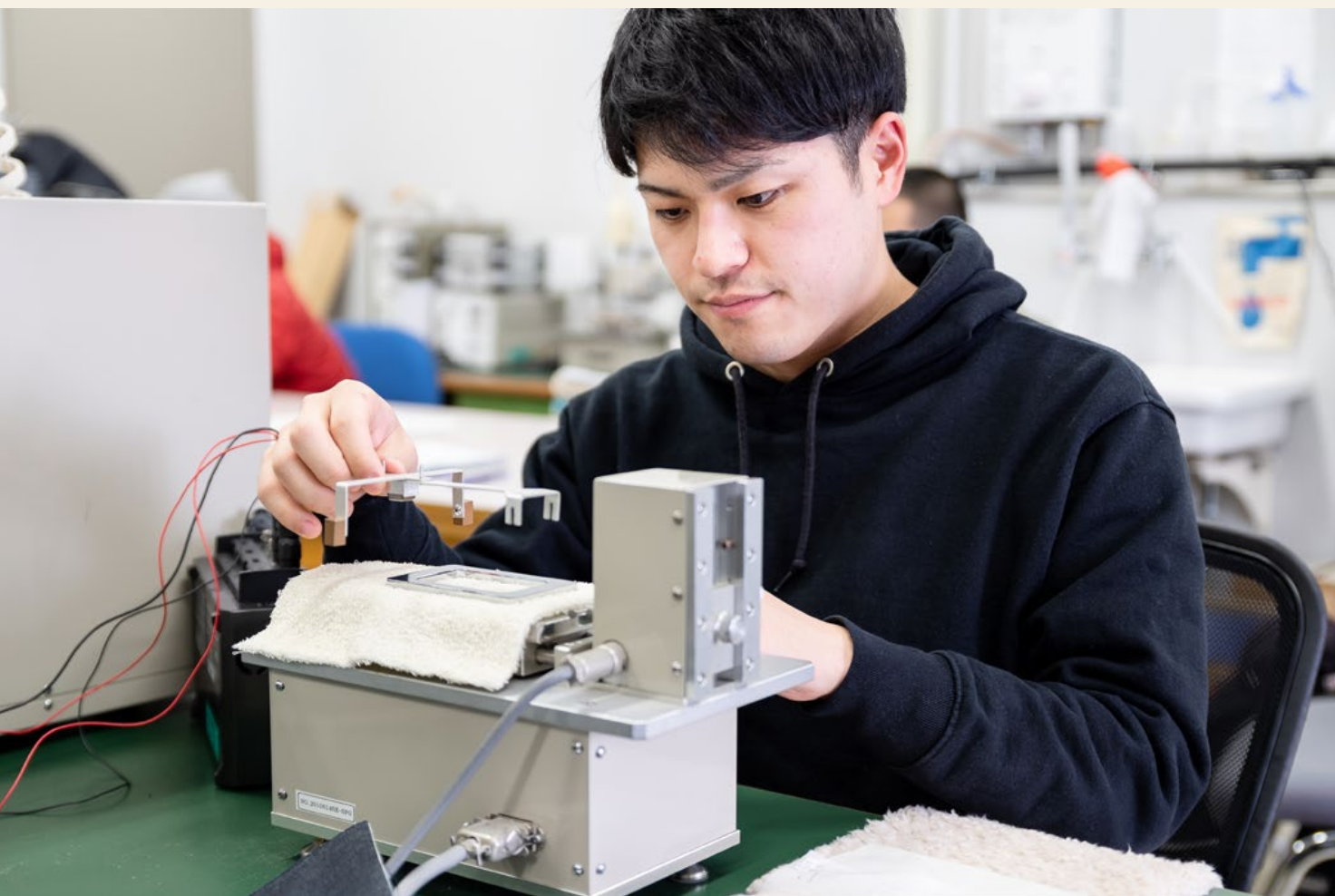


## LABORATORIES

Housing and Environmental Design of Cities and Regions	都市地域居住空間計画学	Sustainable Design	サステイナブルデザイン
Urban and Territorial History	都市史・領域史	Architectural Design	建築デザイン
Architectural Design	建築設計	History and Practice of Preservation, Revitalization, and Repair Technology	保存再生・修理技術史
Structural Engineering of Architecture	建築構造	Computational Design	コンピューテーショナルデザイン
Theory of Architecture	建築論	Building Physics and Building Services	建築環境設備
Architecture, Construction and Innovations	建築構法イノベーション	Landscape Research	ランドスケープ研究
Architecture and Town Planning	建築・まちづくり計画	Urban Planning and Urban History	都市計画・都市史
History of Japanese Architecture, Theory of Urban and Architectural Heritage	日本建築史・都市建築遺産論	History of Japanese Art & Architecture	日本建築・美術史
Architectural Planning and Design for Regional Facilities	建築計画・地域施設計画		
History of Modern Architecture and Conservation-Revitalization Design for Modern Architectural Heritage	近代建築史・保存再生学		

# ADVANCED FIBRO-SCIENCE

## FIBER-SCIENCE & ENGINEERING



### LABORATORIES

Media Technology	メディア工学
Softness Design	やわらかさデザイン
Textile Dyeing and Finishing	機能加工
Functional Materials	機能材料
Smart Textile	スマートテキスタイル
Composite Material	複合材料
Kansei Information Design Engineering	感性情報デザイン工学
Haptics	ハプティクス
Environmental and Exercise Physiology	環境・運動生理学
Sense Tex	センステック
Fibro-environmental Engineering	ファイプロ環境工学

# BIOBASED MATERIALS SCIENCE

## FIBER-SCIENCE & ENGINEERING



### LABORATORIES

System Engineering for Bio-resources	生物資源システム工学
Synthetic and Biomolecular Chemistry	バイオ分子創成化学
Polymer Circular Chemistry	高分子循環化学
Bio-based Materials Chemistry	バイオベース マテリアル化学
Environmentally Benign Polymeric Materials	サステナブル 材料合成化学
Bio-functional Materials	バイオ機能材料
Bio-nanofiber	バイオナノファイバー
Properties of Nanomaterials	ナノ材料物性

# dCEP & KYOTO AGORA

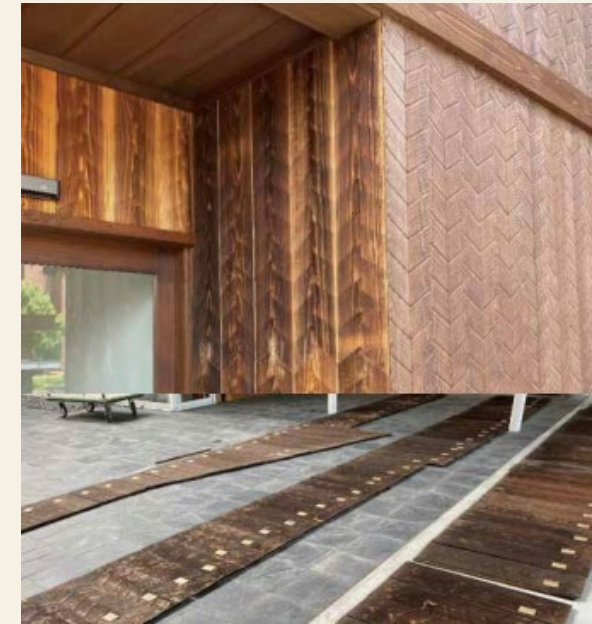
Enhancement of Multidisciplinary Approach

Students: **Design-centric Engineering Program (dCEP)**

- Open to master's students of all majors.
- “Sessions” for practice and a “Test Bed” for verification and evaluation.

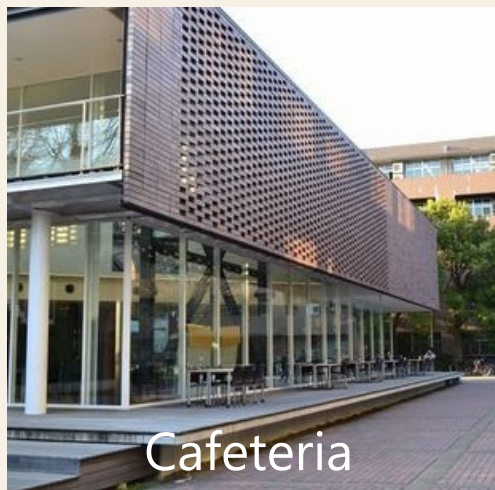
Faculty members: **KYOTO AGORA**

- Exchange and collaboration among faculty members beyond their areas of expertise.



Development and Verification of Laser-engraved Wood Exterior Material

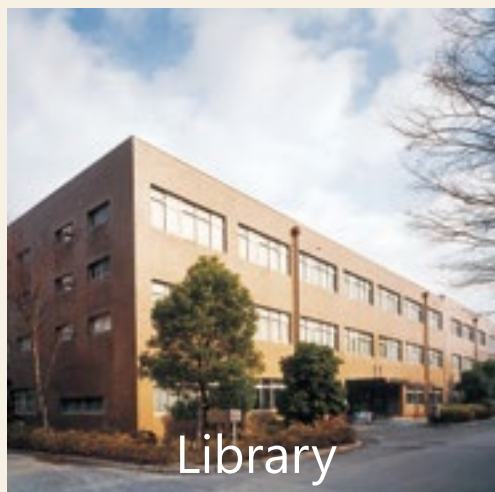
# FACILITIES & DORMITORIES



Cafeteria



Museum



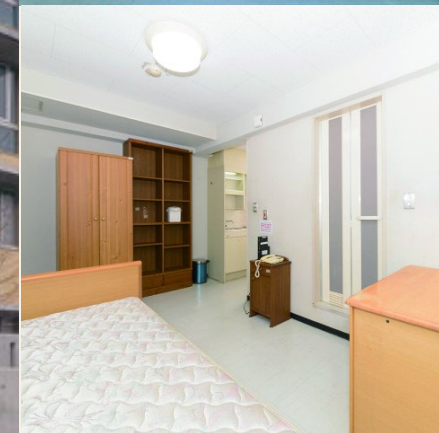
Library



Anniversary Hall



Dormitory  
MARIKOJI KAIKAN



Dormitory  
MATSUGASAKI KAIKAN



# LIFE AT KIT

International students are well supported by friendly staff and students.

## Student Tutor



A KIT student tutor is assigned to each of the international students. They often become life-long friends.

## Friendly Staff



Experienced staff provide a wide range of support for international students.

## KITICO



KIT International Communication Organization (KITICO) is a volunteer student group that supports international students.

# LIFE AT KIT



Many events are held where international students can experience Japanese culture and interact with Japanese students.

Almost every day, the Mcafé, a gathering where students can chat freely in any language is held on campus. Students are having fun learning about each other's cultures!

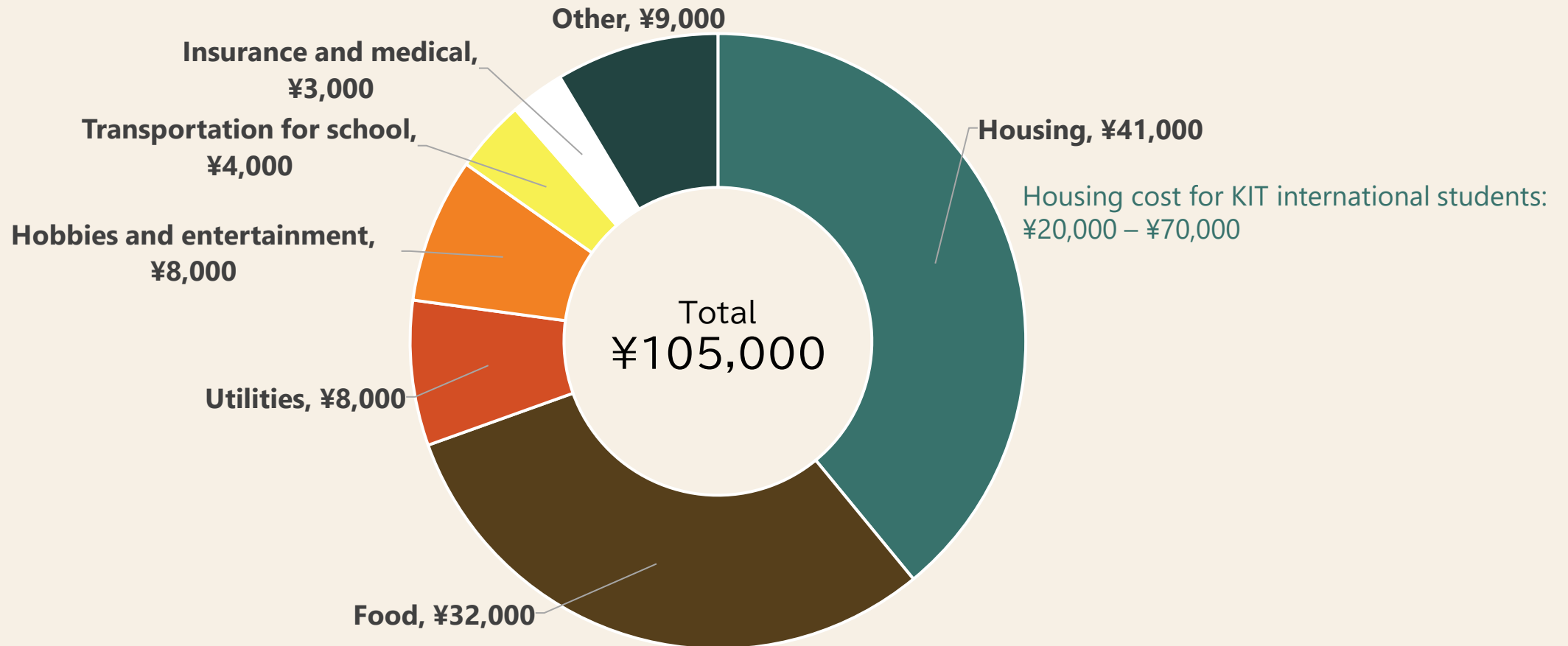
# LIFE AT KIT

Several times a year, KIT organizes cultural field trips that international students can join!



# LIVING EXPENSES in JAPAN

## Average monthly expense



# STUDENT ACHIEVEMENTS

## Formula 1 Team



The KIT Student Formula 1 Team is one of the best in Japan. They won **the overall championship** in the Student Formula Japan Competition in 2025, **FOUR** years in a row!

## Robot Competition Team



KIT student team "Fliegen20" **won the championship** in the Indoor-flight Robot Competition 2019 and again in 2020! In 2023, the team won Special Award!

# STUDENT ACHIEVEMENTS

Employment Success Rate **98.5 %**

Master's Degree Graduates / 2024 academic year

## Place of Employment



**Panasonic**

**RICOH**

**SONY**

**Nintendo®**

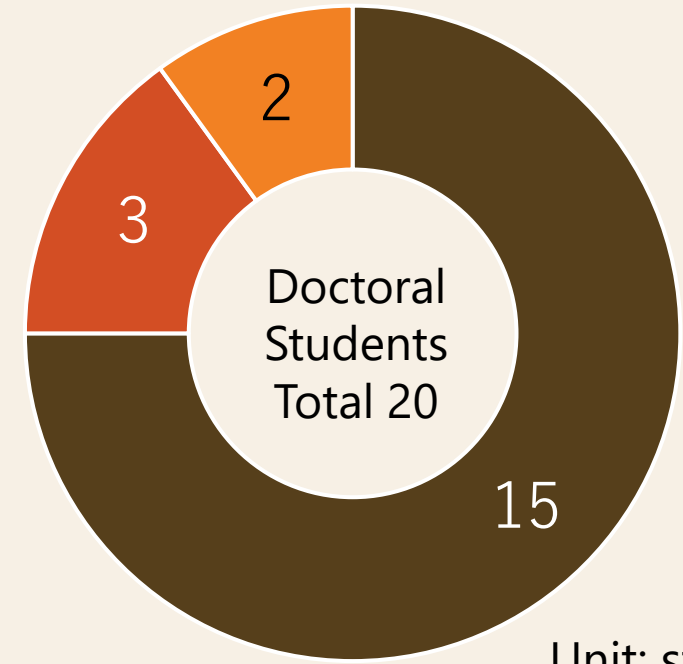
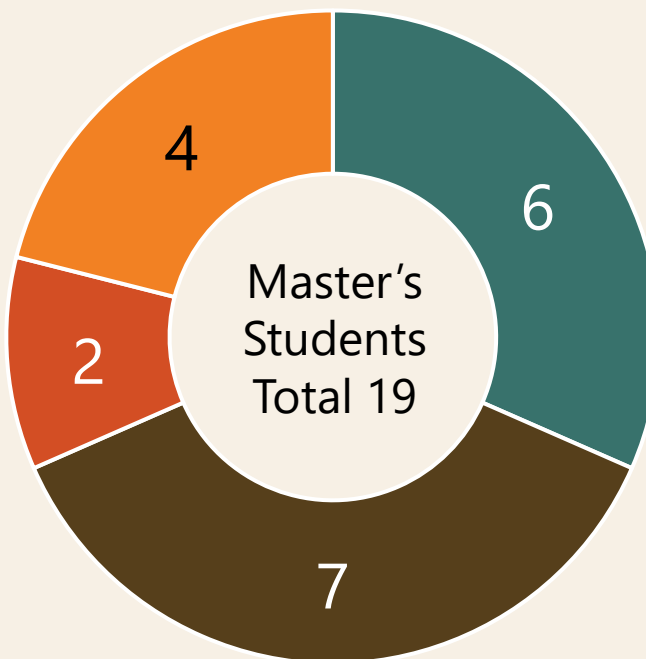
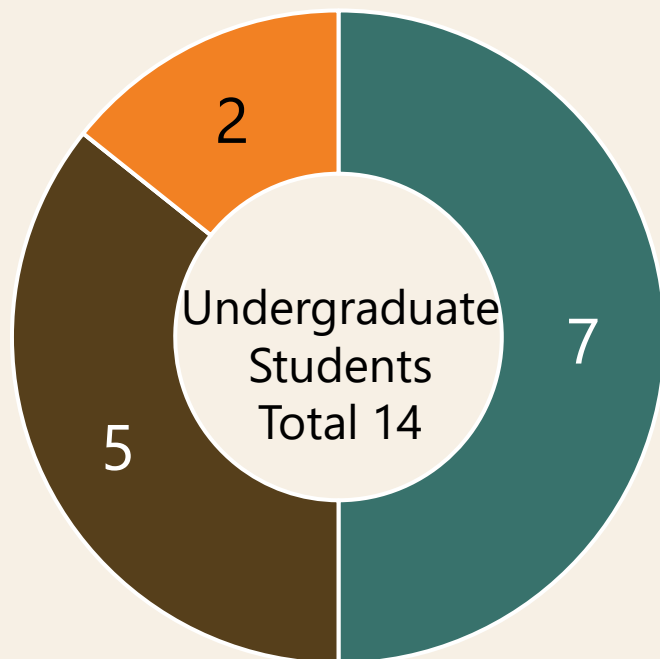


<https://www.kit.ac.jp/interview/kit-interview-vol-1/>

# CAREER PATH OF INTERNATIONAL STUDENTS

## International Students who graduated from KIT in AY2025

■ Higher Education   ■ Employment (Japan)   ■ Seeking for Job   ■ Others



Unit: students

# STUDY OPTIONS at KIT

**1. Undergraduate Program** [4-year]

**2. Master's Program** [2-year]

**3. Doctoral Program** [3-year]

**4. Co-Tutelle Program**

**5. IGP** International Graduate Program

**6. Exchange Program**

**7. Lab Internship**

**8. Summer Schools**

**9. Research Students**

◀ *Degree Programs*

◀ *Short-term Programs*

◀ *Other*

# FEES & TUITION

	Entrance Exam Fee	Registration Fee	Tuition
Undergraduate Program	17,000 JPY ≐ 108 USD	282,000 JPY ≐ 1,793 USD	535,800 JPY ≐ 3,406 USD
Master's Program Doctoral Program IGP	30,000 JPY ≐ 190 USD	282,000 JPY ≐ 1,793 USD	535,800 JPY ≐ 3,406 USD

- Applications are accepted on a semester-basis.
- Self-funded students in financial need may apply for a tuition fee exemption.

Based on exchange rates as of May 1, 2026

# SCHOLARSHIPS

## *Degree Programs*

**1. Undergraduate Program** [4-year]

**2. Master's Program** [2-year]

**3. Doctoral Program** [3-year]

**4. IGP** International Graduate Program

## *Short-term Programs*

**5. Exchange Program**

**6. Lab Internship** (Less than 3 months)

**7. Summer Schools**

**8. Research Students** *Other*

Each scholarship has its own academic status and language proficiency requirements.

### ① **MEXT (Japanese Government)**

Undergraduate: 120,000JPY  $\doteq$  763 USD/Mon.  
Master's: 147,000JPY  $\doteq$  935 USD/Mon.  
Doctoral: 148,000JPY  $\doteq$  941 USD/Mon.

### ② **JASSO**

80,000JPY  $\doteq$  509 USD/Mon.

### ③ **KIT**

40,000JPY $\sim$   $\doteq$  254 USD/Mon. $\sim$

**For IGP: 80,000JPY  $\doteq$  509 USD/Mon.**

④

**Private**

Based on exchange rates as of May 1, 2026

# FELLOWSHIP & MORE

<b>Fellowship</b>	<b>Living Expenses (per year)</b>	<b>Research Expenses (per year)</b>	<b>Others</b>
Selected Doctoral Students	1,800,000 JPY ≒ 11,444 USD	600,000 – 700,000 JPY ≒ 3,815 – 4,450 USD	Postdoctoral Career Support

## **Research Assistant**

1,400 JPY ≒ 9 USD / hour (About 250 hours/year)

# ADMISSIONS

Admission in April

4月入学(年1回)

Language of instruction:

Japanese

授業は日本語で行われます

Classes are conducted in Japanese.

## Undergraduate Program

### For April 2027 Admission

- 1. Requirements for application:**
  - EJU (日本留学試験)
    - Japanese: score 280 or over (out of 400)
    - Mathematics: score 120 or over (out of 200)
    - Science
  - TOEFL
- 2. Application Period:**

July 28 – August 3, 2026
- 3. Entrance Exam:**

in Kyoto on August 25, 2026

  - Essay
  - Interview

# ADMISSIONS

## Master's & Doctoral Programs

	Regular Program	Regular Program	International Graduate Program [ IGP ]
Language of instruction	<b>Japanese</b>	<b>Japanese</b>	English
Admission	April	<b>September</b>	<b>September</b>
Entrance Exam	February in Kyoto (Online exam available for Doctoral Program applicants)	August in Kyoto (Online exam available for Doctoral Program applicants)	January, online
Notes			Only available to students from KIT Partner Universities



✓ Available in all 13 Master's and 8 Doctoral programs



✓ Lectures and guidance available in English



✓ Open to students from KIT partner universities worldwide



✓ 2 learning category choices:

A. 2 year Master's course

B. 3 year Doctoral course



## CEFR\* B2 level is required!

\*Common European Framework of Reference for Languages.

CEFR	IELTS	TOEFL iBT	Duolingo	PTE	Cambridge	TOEIC(L&R and S&W)
------	-------	-----------	----------	-----	-----------	-----------------------

### **B2**

Each of the four components must be scored at CEFR B2 level or above

Category	General IGP	IGP Sub-Program (EFM / STL) *
<b>TWO-year Master's Course</b>	➤ MEXT Scholarship (General)	➤ MEXT Scholarship (Priority) ➤ KIT Fund Scholarship
<b>THREE-year Doctoral Course</b>		

*EFM	=Human Resource Development Program for the Eco-Friendly Materials Manufacturing Sector
*STL	=SEMICON TECH LEADER Development Program for the Next Generation Semiconductor

# What is IGP Sub-Program (**EFM** / **STL**)?

Sub-Program	What is EFM / STL	
<p><b>EFM</b></p>	<p>=Human Resource Development Program for the <b>E</b>co-<b>F</b>riendly <b>M</b>aterials Manufacturing Sector</p>	<p><b>1. FEATURES OF EACH PROGRAM</b></p> <ul style="list-style-type: none"> <li>✓ EFM focuses on developing eco-friendly materials and processes.</li> <li>✓ STL trains future leaders in the semiconductor industry.</li> </ul> <p><b>2. OPEN TO ALL FIELDS</b></p> <ul style="list-style-type: none"> <li>✓ No specific background is required.</li> <li>✓ Students from other majors are welcome to join.</li> <li>*The available majors in STL are limited.</li> </ul>
<p><b>STL</b></p>	<p>=<b>S</b>EMICON <b>T</b>ECH <b>L</b>EADER Development Program for the Next Generation Semiconductor</p> <p>*STL Opening: TBD (Final decision in early December 2025)</p>	<p><b>3. REQUIRED COURSES (MASTER'S ONLY)</b></p> <ul style="list-style-type: none"> <li>✓ Master's students take three required courses in addition to their regular coursework and research.</li> <li>✓ No extra required courses for doctoral students.</li> </ul> <p><b>4. SCHOLARSHIP OPPORTUNITIES</b></p> <ul style="list-style-type: none"> <li>✓ EFM/STL students can apply for both the MEXT Scholarship and the KIT Fund Scholarship.</li> <li>✓ They have a higher chance of receiving MEXT Scholarship than general IGP applicants.</li> </ul>

<b>EFM / STL (IGP Sub-Program)</b>	(a) MEXT Scholarship	(b) KIT Fund Scholarship for EFM / STL
<b>IGP (General Program)</b>	(a) MEXT Scholarship	No applications accepted

<b>Financial Support</b>	<b>(a) MEXT Scholarship</b>	<b>(b) KIT Fund Scholarship for EFM / STL</b>
<b>Scholarship</b>	JPY 147,000 - 148,000/month	JPY 80,000/month
<b>Application fee</b>	Refunded after admission	Refunds for excellent students
<b>Admission fee</b>	Waived	Waivers for excellent students
<b>Tuition fee</b>	Waived	Waivers for excellent students
<b>Travel Expenses</b>	Provided	Not provided

## Step 1: Check Information

- ✓ Visit the KIT

[https://www.kit.ac.jp/en/prospective\\_student/international-graduate-program/](https://www.kit.ac.jp/en/prospective_student/international-graduate-program/)



# FIND RESEARCHERS

Top→Prospective Students→ Find Researchers  
[https://www.liaison.kit.ac.jp/researchers\\_db/](https://www.liaison.kit.ac.jp/researchers_db/)



## 研究者紹介ハンドブック 🔍

### ▶ 所属検索



### ▶ 研究者名検索(50音順)

- ▶ ア行
- ▶ ナ行
- ▶ ラ行
- ▶ カ行
- ▶ ハ行
- ▶ フ行
- ▶ サ行
- ▶ マ行
- ▶ 英数その他
- ▶ タ行
- ▶ ヤ行

### ▶ SDGsから検索



\*Japanese Only

# FIND RESEARCHERS



## Laboratories

- > Applied Biology
- > Innovative Materials
- > Material's Properties Control
- > Materials Synthesis
- > Functional Chemistry
- > Electronics
- > Information Science
- > Mechanophysics
- > Mechanodesign
- > Design
- > Architecture
- > Advanced Fibro-Science
- > Biobased Materials Science
- > Art and Science

<https://www.kit.ac.jp/en/research/>

The screenshot shows a YouTube search for "kyoto institute of technology". The search results display the channel page for "京都工芸繊維大学" (Kyoto Institute of Technology), which has 990 subscribers. The channel page includes a banner with the university's logo and name in Japanese and English. Below the banner, there are navigation tabs for "ホーム" (Home), "動画" (Videos), "再生リスト" (Playlists), "コミュニティ" (Community), "チャンネル" (Channel), and "概要" (About). The "動画" tab is selected, showing a list of uploaded videos. The first video is titled "Research at Kyoto Institute of Technology Vol. 9 -- Prof..." with a duration of 2:43 and 103 views. The second video is "Research at Kyoto Institute of Technology Vol. 10 -- Assoc..." with a duration of 2:20 and 53 views. The third video is "Research at Kyoto Institute of Technology Vol. 11 -- Assoc..." with a duration of 2:19 and 44 views. The fourth video is "Research at Kyoto Institute of Technology Vol. 15 -- Projec..." with a duration of 3:04 and 60 views. The fifth video is partially visible with a duration of 39 views.

Search "kyoto institute of technology" on YouTube.

# LINKS

Links to more detailed information can be found on the Prospective Students page of our website.

**TOP page → Prospective Students**

[https://www.kit.ac.jp/en/prospective\\_student/](https://www.kit.ac.jp/en/prospective_student/)



Includes links for:

- Bachelor, Master's and Doctoral Program
  - Examination for Japanese University Admission for International Students (EJU)
  - International Graduate Program
  - Scholarships
  - Housing and Accommodations
  - Monthly Living Expenses
  - YouTube Channel and Facebook Page
- and more.



THANK YOU FOR YOUR ATTENTION

Contact: [kokusai@jim.kit.ac.jp](mailto:kokusai@jim.kit.ac.jp)